

# COMPANY PROFILE

**PT Symbiocon Solusi Integra**  
Integrated Solution Provider  
for Scientific Facility Construction



@symbiocon.id  
[www.symbiocon.com](http://www.symbiocon.com)



*“Our journey begins  
with a single step...  
...together”*

Commencing in 2025, we embarked on our journey to become a total solutions provider for laboratory facility construction. **Our mission** is to deliver a comprehensive business model, enabling clients to access end-to-end services, from meticulous planning and precise construction to the seamless procurement of interior components and state-of-the-art laboratory equipment. This is all meticulously supported by a team of highly specialized experts, deeply versed in prevailing laboratory standards and regulatory compliance.

**Our vision** is dedicated to actualize our clients' aspirations for laboratory facilities that are innovatively designed, exemplify uncompromising safety standards, and operate with peak efficiency, thereby serving as a foundation for the continuous advancement of science and technology.

**OUR TEAM** comprises a diverse pool of talents, originating from varied scientific and technical backgrounds, each complementing the others. We firmly believe that the power of cross-disciplinary collaboration yields comprehensive solutions for every challenge and problem faced by our clients. Sometimes, approaching problems from both engineering and scientific perspectives unveils new insights within the planning process and throughout the construction of a laboratory facility.

## Expertise

Leveraging specialized knowledge and experience in laboratory design and construction

## Compliance

Adhering to all relevant regulations, standards, and safety guidelines

## Innovation

A commitment to staying at the forefront of laboratory design and construction methodologies

“We promised a  
**better design**  
than the others.”

In every planning endeavor, we meticulously infuse the spirit of innovation into each design we create. Innovation isn't just a practice; it is the very culture and soul of our business. This unwavering commitment ensures our designs are not merely superior, but also deliver a profound and significant impact throughout the entire construction process.



“Comprehensive  
scientific facility  
**construction services**”

Our expertise transcends mere conceptual designs on paper. We possess the profound capability to transform those visions into a fully functional, cutting-edge laboratory facility. Bolstered by strong partnerships and extensive network of trusted suppliers, we are uniquely positioned to undertake the construction of highly advanced facilities, including state-of-the-art modular operating theaters, pristine cleanrooms, secure biocontainment units, and specialized animal facilities.



## “Full range of **laboratory furniture** and outfitting product”

Our commitment is to be your singular partner for all laboratory outfitting needs. We offer a full range of laboratory furniture and outfitting products, ensuring that every component, from modular casework to specialized storage and essential utilities, seamlessly integrates into your unique lab environment. This comprehensive approach means you gain access to a complete suite of solutions, simplifying your procurement process and guaranteeing consistent quality across your entire laboratory infrastructure.



## “Experienced and certified **professionals**”

Our team is composed of seasoned experts, each bringing extensive experience and specialized certifications in various facets of laboratory facility development. This deep well of knowledge ensures that every project, from initial concept to final execution, benefits from unparalleled professional insight and adherence to the highest industry benchmarks.



# *An integrated solution...*

## Design Development

This phase involves refining the chosen concept, developing detailed floor plans, elevations, and specifications. This stage is about **translating the conceptual** design into a comprehensive set of construction documents.

## Site Survey

This critical first step involves a **detailed assessment** of your existing space, or proposed location, to understand its physical characteristics, infrastructure, and any potential challenges.

## Conceptual Design

This involves creating initial layouts, sketches, and 3D visualizations to illustrate potential laboratory configurations. This stage is about **exploring possibilities** and establishing the overall direction of the project.

## Budgeting

Parallel to the design development, we provide detailed **budgeting and cost estimation**. We work closely with our suppliers and contractors to obtain accurate pricing for materials, labor, and equipment.

## Construction

Once the design and budget are finalized, we commence the construction phase. We prioritize **quality, safety, and efficiency**, minimizing disruptions and ensuring timely completion.

## Installation and Handover

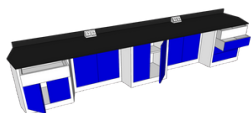
The final step is the installation of all laboratory equipment and interior outfitting. Our experienced installation team ensures precise placement and proper functionality. We conduct thorough **testing and commissioning** to verify that all systems are operating as intended. We provide **comprehensive training and support** to ensure your team is comfortable and confident in using the new laboratory facilities.

## Project Management

Throughout the entire project, our dedicated project management team oversees all aspects of the process. We act as your **single point of contact**, coordinating all activities, managing schedules, and ensuring clear communication.

***...from Concept to Completion***

## LABORATORY FURNITURE



## FUME HOODS

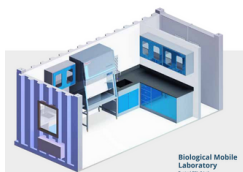


## SAFETY STORAGE CABINET

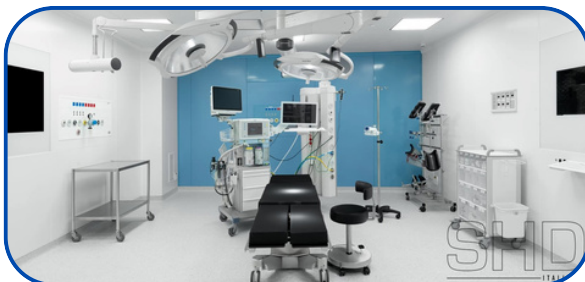
Please check our website for a more detailed information about our product and services  
[www.symbiocon.com](http://www.symbiocon.com)



## CLEAN ROOM AND CONTAINMENT



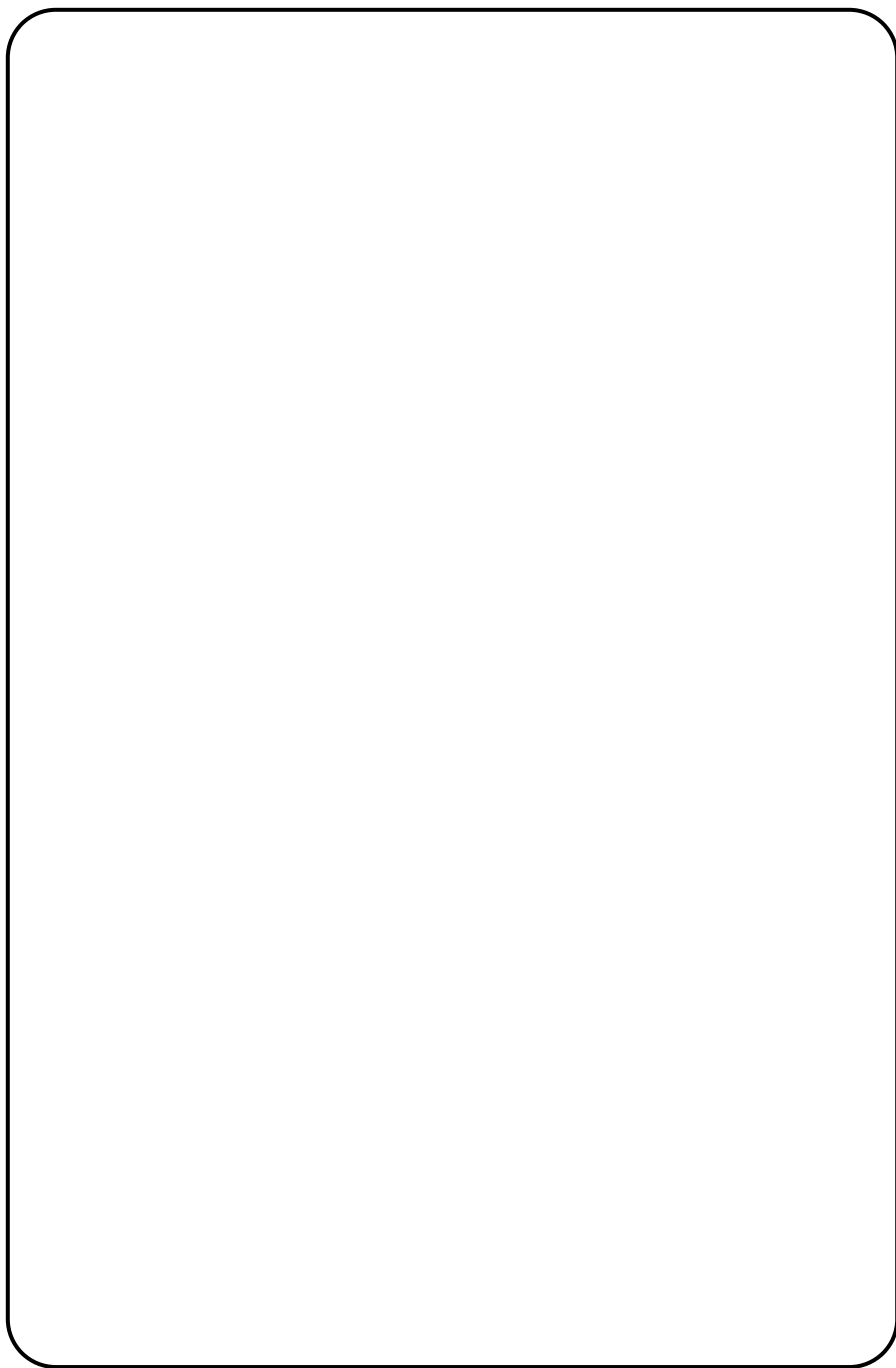
Biological Mobile Laboratory



Please check our website for a more detailed information about our product and services  
[www.symbiocon.com](http://www.symbiocon.com)



**BROEN-LAB**



“We Don’t Just Build...  
...We **Actualize** Your Concept”

| Stem Cell Processing Facility | Industrial QC Lab | Molecular  
Biology (PCR) Lab | Educational Teaching Lab | Clinical Lab |  
Clean Room | Pharmaceutical Manufacturing Facility |  
Biocontainment | Animal Research Facility | Modular  
Operating Theater | Research Lab | Mobile Laboratory |



## **PT Symbiocon Solusi Integra**

Kawasan Industri Jababeka  
Blok K No.8A, Jl. Jababeka XI A,  
Harja Mekar, Cikarang Utara,  
Bekasi Regency, West Java 17530,  
Indonesia

Phone: +62 21 5010 6780  
Whatsapp: +62 819 9551 5519  
Email: [info@symbiocon.com](mailto:info@symbiocon.com)